
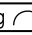




- Non-spring return actuators, for operation of DN100...150 Butterfly valves, dual GRVU.. are for operation of DN125... 200 Butterfly valves
- Torque 40 Nm
- Open/Close control: GRVU24, GRVU230
- Modulating control: GRVU24-SR

Technical data

GRVU24	Nominal voltage	AC 24 V 50/60 Hz, DC 24 V
	Nominal voltage range	AC/DC 19.2 ... 28.8 V
	Power consumption	- running 4 W - holding 2 W
	For transformer/wire sizing	6 VA
	Connecting cable	Cable 1m, 3 x 0.75mm ²
	Protection class	III (safety low voltage)
	Weight	Approx. 1550g
GRVU230	Nominal voltage	AC 100...240 V 50/60 Hz
	Nominal voltage range	AC 85...265 V
	Power consumption	- running 4 W - holding 2 W
	For wire sizing	7 VA
	Connecting cable	Cable 1m, 3 x 0.75mm ²
	Protection class	II (Totally insulated) 
GRVU24-SR	Weight	Approx. 1550 g
	Nominal voltage	AC 24 V 50/60 Hz, DC 24 V
	Nominal voltage range	AC/DC 19.2 ... 28.8 V
	Power consumption	- running 4.5 W - holding 2 W
	For transformer/wire sizing	6.5 VA
	Connecting cable	Cable 1m, 4 x 0.75mm
	Control signal Y	DC 2(0)...10 V @ input resistance 100KΩ
	Feedback signal U	DC 2...10 V @ max. 1 mA
	Synchronisation	± 5%
	Protection class	III (safety low voltage)
	Weight	1550g
Common technical data	Torque	Min. 40 Nm @ nominal voltage
	Angle of rotation	max. 95°
	Direction of rotation	Pre-setting  to close (switch hidden under a label)
	Sound power level	max. 45 dB(A)
	Position indicator	mechanical, remote visible
	Manual override	Gearing disengaged by pressing the pushbutton, manual operate while the button is held depressed
	Running time	150s
	Mode of operation	EN 60730-1 Type 1
	Ambient temp.	- 30°C...+ 50°C
	Non-operation temp.	- 40°C...+ 80°C
	Humidity test	95% RH, non condensing (EN 60730-1)
	Degree of protection	IP54 in any direction
	Low Voltage Directive	CE according to 89/336/EEC CE according to 73/23/EEC
	Maintenance	maintenance free

Product features

Mode of operation GRVU24-SR is controlled by means of a standard control signal DC 2(0)...10V and travels to the position defined by this signal. The feedback signal U allows the valve position (0...100%) to be electrically indicated and serves as a follow-up control signal for other actuators.

Adjustable angle of rotation Adjustable angle of rotation with mechanical end stops.

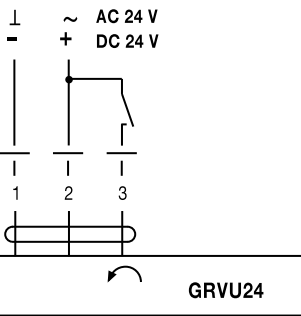
High functional reliability The actuator is overload-proof, requires no limit switches and automatically stops when the endstop is reached.

Accessories

	Description
Electrical accessories (available on request)	Auxiliary switch S..A.. (WD6P needed)
	Feedback potentiometer P..A.. (WD6P needed)
	Positioner SG..24
	Digital position indication ZAD24
Linkage kit	WD6-GR, for DN100...150 butterfly valve with single GRVU.. actuator, see page 28
	WD6-2GR, for DN125...200 butterfly valve with dual GRVU.. actuators, see page 29
	WD6P, for DU6... butterfly valve with Auxiliary Switch or potentiometer

Wiring diagrams

GRVU24 Open/Close control



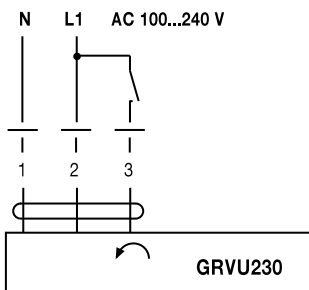
Notes

- Connection via safety isolating transformer.
- Other actuators can be connected in parallel.

Please note the performance data.

Direction of rotation
(factory setting, switch hidden)

GRVU230 Open/Close control



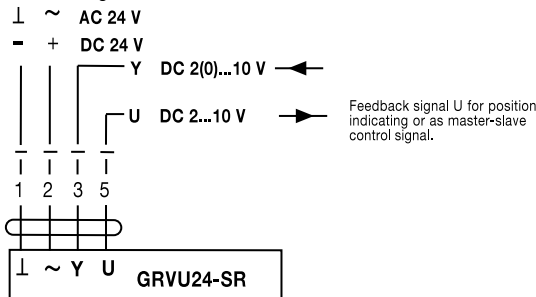
Notes

- Caution: Power supply voltage !
- Other actuators can be connected in parallel.

Please note the performance data.

Direction of rotation
(factory setting, switch hidden)

GRVU24-SR Modulating control



Notes

- Connection via safety isolating transformer.
- Other actuators can be connected in parallel.

Please note the performance data.

Direction of rotation
(factory setting, switch hidden)

Feedback signal U for position indicating or as master-slave control signal.

Dimensions

Unit [mm]

GRVU24
GRVU230
GRVU24-SR

